

The logo for the Abbotsleigh Old Girls' Union (AOGU) is a white circle with a yellow border. Inside the circle, the letters 'AOGU' are written in a black serif font, with a yellow fleur-de-lis symbol integrated into the letter 'O'.

AOGU

Abbotsleigh Old
Girls' Union



ABBOTSLEIGH

The background of the poster is a photograph of a school gate. The gate is made of black metal bars and is flanked by two large, square brick pillars. Each pillar has a white spherical ornament on top. The gate is open, leading to a paved path that stretches into the distance. On either side of the path are green hedges and trees. In the background, a brick building is visible under a cloudy sky.

Back to School Day

Sunday 27 July 2025

**Reconnect.
Reminiscence.
Rediscover.**

PROGRAM AND MAP

**10 am-12 noon Junior School campus
12 noon-4.30 pm Senior School campus**



Abbotsleigh Old
Girls' Union

Welcome Back to School!

It is fabulous to have you back at Abbotsleigh during our 140th Birthday celebrations. Today, both the Junior School and the Senior School campuses are being revisited by around 250 Old Girls, 20 former staff and 100 family members!

Our hope for today is that you will feel connected to Abbotsleigh and her people, both those from your past – your schoolmates, former colleagues and past parents – and today's students, staff and parents. We all belong to one Abbotsleigh community.

As you wander around, we are sure that you will be stunned by the many changes to both the buildings and grounds, as well as how the girls learn in and out of the classroom. We also hope you enjoy watching videos of the past as much as we have, and are as moved by the breadth and depth of the Old Girl artwork.

The AOGU Committee is grateful for the support of Headmistress Megan Krimmer, and her amazing staff in helping us to make today happen. We are especially thankful to the Old Girls Relations Manager Heidi Grout, the Publications team, Rev Sarah Hobba, Susannah Pinter (Flint, 1989) our Old Girl Choir conductor, the Archivist Dr Jennifer McLaren, the Head Librarian Karen Seeneevassen, Lyndon Franks, the AV guru, Hendri Hendrigus for the catering equipment, and Mary Faith and Lisa Jones in the Grace Cossington Smith Gallery. As the organisers of today, we also appreciate the assistance of the AOGU Committee, students and current Abbotsleigh Old Girls' mums and their daughters, and were thrilled that Robyn Claydon, Rev Ross McDonald and Bruce Tasker were able to participate in today's service.

Whatever you do and see today, our hope is that as you leave through Abbotsleigh's gates, you feel reconnected to your friends and your school, having fondly remembered so many little things you had forgotten, that you are appreciative of your time here and excited by the new things you discovered today about the people and environment of Abbotsleigh today.

Happy 140th Birthday Abbotsleigh!

Regards

Sarah Franks (1991)
AOGU President

Bron Cooper (Ross-Jones, 1980)
Events Sub Committee Co-Chairs

Belinda Burton (Tjeuw, 1991)

Logistics

Parking: Parking is available in the car park, which is located under the Sports Field and is accessible via **Ada Avenue, Gate 1A**. There is also parking along Ada Avenue and Lucinda Avenue near the school, or on the other side of the Pacific Highway on Woonona and Neringah Avenues, and the Wahroonga Village council car park has 2-3 hour time limits. We encourage the use of public transport. If anyone needs special accessibility parking and has not advised us, please contact Heidi Grout ASAP.

Name tag: Everyone will be allocated a name tag for the day. It contains important information such as your allocated tour groups and what events you are registered for. **Please pick up your name tag at the first key event you are attending** (Junior School tour, Chapel service, lunch, Senior School tour or drinks function). For those who are not attending any of the key events or if you forget to pick up your name tag at your first event, please find your name tag at the Senior School Library, which is the Back to School Day base on L2 of the Library, on the same level as Chapel Walk.

Lunch Service: We are providing a quick and easy self-service lunch of delicious sandwiches, wraps, sushi and cake. **If you are not going to the Chapel service we recommend that you eat closer to 1 pm**, as there will be an influx of Chapel attendees at 1.25 pm. Remember, if you are going on a long tour, please leave the lunch area around 1.45 pm to make your way to the forecourt outside the Assembly Hall. The short tour should leave the Library around 2 pm.

Tours: If you are going on a tour we suggest you wear **sensible walking shoes**, especially if you are going on the Senior School long tour. **You will be allocated a tour colour** (in Abbotsleigh House colours), which you will find on your name tag.

- **Junior School tour** departs at 10.30 am from the Bundarra Lawn on Woonona Avenue. **Please gather by 10.20 am.**
- **Senior School long tour** departs at 2 pm from the forecourt of the Assembly Hall/bottom of the Chapel stairs. **Please gather by 1.50 pm** and find the tour guide holding up your tour colour. This tour will last about 90 minutes and involve walking up and down the hill towards the sport facilities and boarding houses.
- **Senior School short tour** departs at 2.15 pm from the forecourt of the Assembly Hall/bottom of the Chapel stairs. **Please gather by 2.05 pm** – your tour guide will be holding up your tour colour. This tour will last about an hour and be predominantly flat along the top of the campus.

Kathleen McCredie documentary:

We have three screenings of the special documentary commissioned by the AOGU in 2018, in celebration of Kathleen McCredie's 90th birthday. This is only the second time it has been screened, and this 30-minute documentary will be shown on the lower level of the Library, at:

- 12.15 pm: for those not attending Chapel
- 2.15 pm: for those not going on a tour
- 3.45 pm: for those not going to the drinks at the Gallery

Merchandise: There is a lot of **new AOGU merchandise** for sale on the day, including the glorious Chapel Window silk scarves. The profits from all AOGU items are donated to the Kathleen McCredie Scholarship Fund. We are also excited to be able to offer you some **other Abbotsleigh merchandise and crested goods**. These items have been created by the Abbotsleigh Parents' Association, the Marian Clarke Society and Foundation, with profits going to both scholarships and other funds to support learning at the school.

Collect your name tag at your first event, otherwise afterwards at the Back to School Day Base on the ground level of the Library (off Chapel Walk)

Key events timetable

(Numbers refer to Map locations)

Time	Activity	Location
10.30 am-12 pm	Junior School tour	Meet Bundarra Lawn, Junior School
12.30-1.15 pm	Chapel Service to celebrate the Chapel's 60th anniversary with guest speakers Mrs Robyn Claydon OAM, Rev Ross McDonald, Mr Bruce Tasker and the Old Girls Choir	Chapel, Senior School (3)
1-2.30 pm	Lunch and refreshments* – catch-up over a light self-service lunch of sandwiches, wraps, sushi and cake	Library, upper level (5)
2-3.30 pm	Senior School tours* Meet outside the Assembly Hall, Senior School (1) <ul style="list-style-type: none">• Long tour meets at 1.50 pm for a 2 pm start. It includes the lower campus over 90 minutes• Short tour meets at 2.05 pm for a 2.15 pm start. Focuses on the upper campus over 60 minutes	
3.30-4.30 pm	Drinks with the Artists* – chat with the Old Girl artists over drinks and nibbles to open the exhibition <i>Possibility as Reality</i> , with guest speaker Cathy Wilcox (1980)	Grace Cossington Smith (6) Gallery, Senior School

Drop-in activities from 12 noon-4.30 pm

(Numbers refer to Map locations)

Activity	Location
See the works of 14 Old Girl artists in this exceptional 140th birthday Old Girl Art Exhibition <i>Possibility as Reality</i> , at Abbotsleigh's own gallery	Grace Cossington Smith Gallery (6) (until 3.30 pm)
Smile over memorabilia and uniforms and more in the birthday archival display	Assembly Hall foyer (2)
Watch historical videos of people and places and look at <i>The Weaver</i> collection	Library, lower level (5)
Enjoy one of three screenings of the 2018 Kathleen McCredie documentary	Library, lower level (5) 12.15 pm, 2.15 pm, 3.45 pm
Take a look at the AOGU's 140th birthday gift to Abbotsleigh, a whimsical treescape by Julia Roberts (1983)	Library, lower level (5)
Experience the <i>Humans of Abbotsleigh</i> , a 140th birthday celebration of the people, community and places that have made Abbotsleigh who she is today	Library, lower level (5)
Enjoy a showcase of student works and videos across a range of year groups and subjects to get a sense of how the girls learn today	
Early learning, Year 9 textiles and robotics	iHub, ground level(4)
Year 10 textiles	iHub, lower ground (4)
Primary, English, History	Library, ground level (5)
Year 10 Art	Arts Centre (7)
AOGU merchandise to support the means-tested Kathleen McCredie Award, as well as Abbotsleigh merchandise and crested goods	<ul style="list-style-type: none"> Library, upper level until 2.30 pm (5) Outside the Assembly Hall all day (1)

Connection through
community



140 Years
Abbotsleigh
1885 - 2025



ABBOTSLEIGH



Please collect your name tag at your first registered event, otherwise at the Back to School Day Base in the Library.

Legend

Map reference		
1		Meeting point for longer tours, merchandise sales
2		Archival display – uniforms, memorabilia, videos
3		Chapel – service and student works
4		iHub featuring exhibits of student works on ground and lower ground levels
5	Library	Upper level: lunch and refreshments, merchandise sales (1-2.30 pm)
		Ground level: Back to School Day Base , student works
		Lower ground level: historical videos, <i>The Weaver</i> editions, <i>Humans of Abbotsleigh</i> , AOGU 140th gift, Kathleen McCredie documentary
6		Grace Cossington Smith Art Gallery – <i>Possibility as Reality</i> Old Girl art exhibition General admission until 3.30 pm, then drinks with the artists
7		Arts Centre



Toilets



Lifts



Parking

AOGU | Merchandise



Purchases can be made [HERE](#)
or by scanning the QR code



Tea Towel

available in vanilla or mocha

\$20 each or three for \$55

Apron

with pocket

\$35 each or two for \$65

Camellia Pendant

Released in 2008 for the
AOGU Centenary.

Limited stock available.

\$100 each

Foldable Shopping Bag

carry one in your bag
or backpack

\$8 each

Scarf

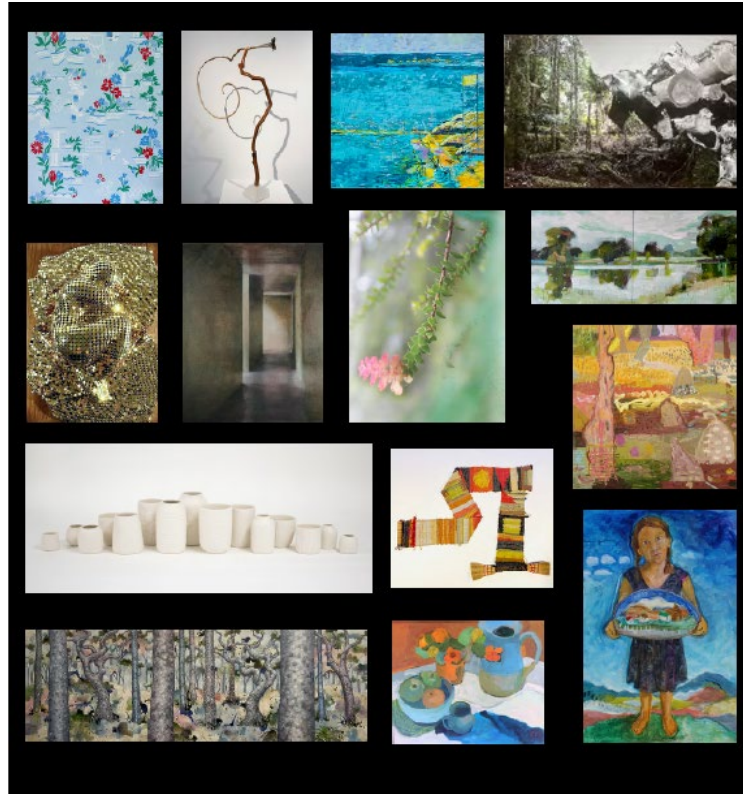
100% Silk, *Pure* and *Rejoice* Chapel Windows

\$90 each

Profits from the sale of AOGU Merchandise are donated to the Kathleen McCredie Award Fund which provides means tested scholarships to enable girls to attend Abbotsleigh from Years 10-12.

Possibility As Reality: 140th Birthday Exhibition of Old Girl Artists

Grace Cossington Smith Gallery
19 July to 8 August 2025



To celebrate Abbotsleigh's 140th birthday, the Grace Cossington Smith Gallery presents a curated exhibition showcasing works by Abbotsleigh Old Girls who currently practice as artists.

The exhibiting artists have been selected by Rhonda Davis, Head Curator of Macquarie University Gallery.

The artists selected represent each decade from 1960-2010.

Can you see any familiar names from amongst these artists?

- The 1960s: Janet Laurence (1963)
- The 1970s: Sally Stokes (1970), Louise Fowler-Smith (1973), Helen Redmond (Bondfield, 1973), Fiona Mitchell (1975), Alex Snellgrove (1976), Lucy Buttenshaw (1979)
- The 1980s: Jaq Davies (1980), Julia Roberts (1983), Lisa Pang (1985)
- The 1990s: Rachel Fairfax (1990), Lucy Barker (1992)
- The 2010s: Eloise Rankine (2010), Emily Galicek (2012)

Check out the [Exhibition webpage](#)

[Download the catalogue](#) with an amazing foreword by Maggie Mackellar (1990)

Donate to the Kathleen McCredie Award Fund

The Kathleen McCredie Award Fund was established by the Abbotsleigh Old Girls' Union in 2001 and is managed by Abbotsleigh Foundation. This award was created in perpetuity to honour Old Girl Miss Kathleen McCredie, Headmistress of Abbotsleigh from 1970 to 1987.

The Award provides means-tested scholarships for full tuition for a girl entering Year 10 who, but for the Award, would not be able to attend or remain at Abbotsleigh. The Kathleen McCredie Award is awarded to a girl who displays significant all round involvement in spiritual, service, cultural and sporting activities and has achieved a high standard of academic excellence.

Since its inception in 2001, eight women have benefitted from the scholarship. The impact of the Award can be seen in [**this video**](#).

There are now enough funds to award the scholarship in two of every three years. Our goal is to enable the scholarship to be granted each year.

Please consider donating to the Kathleen McCredie Award Fund to assist in our goal to award the scholarship annually, and provide yearly access to an Abbotsleigh education for a girl who otherwise would not be able to benefit from all that is Abbotsleigh.

Donations over \$2 to the Kathleen McCredie Award Fund are tax deductible.

Donations can be made [HERE**](#)
or by scanning the QR code:**



AOGU | Merchandise

Scarf

100% Silk, *Rejoice* and *Pure* Chapel Windows

\$90 each



Purchases can be made [HERE](#)
or by scanning the QR code