

# Local Artists

## Hornsby

1 to 17 May 2025



DAVID COLLINS



MATT ELLIOTT



HUA YE

The Local Artists exhibitions celebrate and support the artists of Hornsby and Ku-ring-gai.

These exhibitions are part of an ongoing commitment to foster and highlight the talent and diverse practices of the local creative community, and to embrace artists at every stage of their career.

The Hornsby exhibition opened by Mayor of Hornsby, Cr Warren Waddell.

## Room 1

## MATT ELLIOTT

### *Mindscales*

Matt Elliott is an abstract landscape artist who has a fascination with dream states, creating lucid 'mindscales' with a range of media that draw inspiration from the natural environment. He explores the Australian landscape and waterways, sensitively rendering these vistas in his highly gestural paintings and drawings. Elliott creates his artworks at various locations around Sydney and regional NSW, working en plein air to document his visceral response to the landscape before completing the pieces in the studio.

In 2018 Elliott was awarded the Studio A Professional Pathways Award. He was also awarded residencies in Bundanon (2022), Woollahra Gallery at Redleaf (2024), and the Northern Beaches (2023-present).

This exhibition showcases artworks from his residencies, highlighting his unique perspective and artistic expression. Additionally, Elliott has created collaborative works with David Collins. Produced at Crosslands in the Hornsby Shire, these collaborations blend their artistic visions, capturing the essence of the landscape through their combined efforts.

Elliott has been an active member of Studio ARTES Northside for 25 years, contributing to its vibrant artistic community. Elliott would like to acknowledge the support of artist Zachariah Fenn.

*My studio window*, Bundanon, 2022-23, acrylic and oil stick on plywood, 92.7 x 123.6 cm



Matt Elliott in the studio



|  |         |
|--|---------|
| <i>My studio window</i> , Bundanon, 2022-23, acrylic and oil stick on plywood, 92.7 x 123.6 cm (foyer)   | \$1,500 |
| <i>Bridge over Curl Curl Lagoon</i> , 2024, acrylic, varnish, oil pastel, oil stick, pencil on watercolour paper, 42.5 x 52.5 (foyer)                        | \$500   |
| <i>Wombat (out of nowhere)</i> , 2022-23, acrylic, dye pigment, oil stick, oil pastel, graphite and charcoal on wooden composite board, 33.3 x 52 cm (foyer) | \$350   |
| <i>Arthur Boyd's Garden (Gestural drawing – branches)</i> , 2022, charcoal on watercolour paper, 102 x 82 cm   | \$900   |
| <i>Looking out (Woollahra Gallery at Redleaf)</i> , 2024, acrylic, varnish, dye pigment and oil stick on canvas, 73 x 137 cm                                 | \$800   |
| <i>In the garden on the harbour</i> , 2024, charcoal, acrylic and oil stick on watercolour paper, 104 x 83 cm  | \$1,200 |
| <i>On the Farm</i> , 2019, acrylic, dye pigment, varnish, oil stick and oil pastel on plywood board, 123 x 93 cm (on cover)                                  | \$950   |
| <i>On the road to the Homestead</i> , 2022-23, acrylic, watercolour, dye pigment, oil pastel and pencil on wooden board, 26.4 x 32.6 cm                      | \$250   |
| <i>Study for On the River</i> , 2022, acrylic, ink, varnish, dye pigment, concrete render and oil pastel on ceramic tile, 21.3 x 33 cm                       | \$250   |
| <i>Luke's studio window (tree stump and road)</i> , 2022-23, acrylic and oil stick on plywood, 62.9 x 123.6 cm   | \$950   |
| <i>Pulpit Rock with Shoalhaven River</i> , 2022, watercolour, dye pigment, charcoal and oil stick on watercolour paper, 46.8 x 58.8 cm                       | \$500   |
| <i>Dee Why Surf</i> , 2024, acrylic on reclaimed surfboard, 148 x 47 cm  | \$300   |

### **Collaboration with David Collins, coordinated by Zachariah Fenn**

|   |         |
|---|---------|
| <i>Changing of tides (Crosslands exchange)</i> , 2025, acrylic, gouache, varnish, oil stick on plywood board, 123 x 92 cm | \$1,800 |
| <i>Reflections at Crosslands</i> , 2025, gouache, acrylic, dye pigment and oil stick on watercolour paper, 47 x 65.5 cm   | \$900   |
| <i>Trees on the riverbank</i> , Crosslands, 2025, gouache, ink, acrylic and oil stick on watercolour paper, 47 x 65.5 cm  | \$900   |



Room 2

DAVID COLLINS

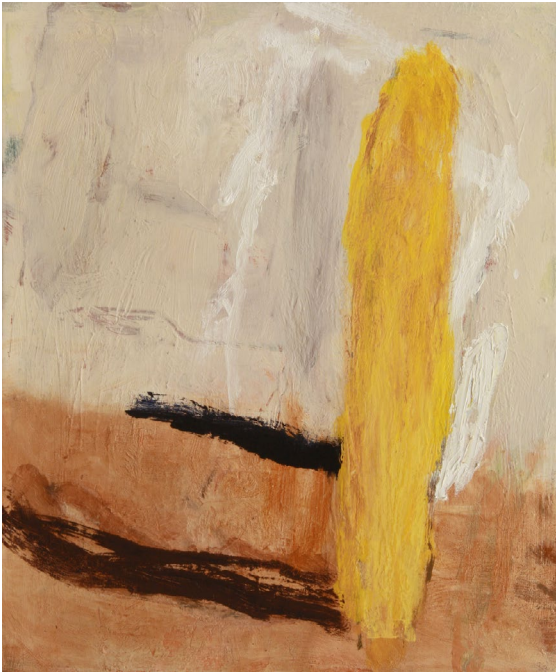
Delta

David Collins is a landscape painter who has lived on the Hawkesbury River NSW since 1987. His work is influenced by bushwalking, rowing on the river and painting from its shores. Since 1990, Collins has held numerous exhibitions and participated in group shows. He has worked in various locations across Australia and overseas, including The Kimberley, The Pilbara, Central Australia, France and has had residencies in China, Queensland, New Zealand and NSW.

Collins has been a finalist in numerous art awards, receiving high commendation in The Wynne Prize 2013, and winning the Local Artist Award in The Grace Cossington Smith art award 2021 and the Local Artist Award in The Hornsby Art Prize 2024.

Collins’s exhibition, *Delta*, is a group of paintings inspired by landscapes from the east coast of NSW, the Hawkesbury River, the Great Dividing Range, Cowra, Broken Hill and Alice Springs. Each place has its distinct qualities and, like a river system, his impressions, memories, lines and colours flow through one painting into another.

He is represented by Defiance Gallery in Sydney.



Desert Oak, 2024, oil on canvas, 60 X 50 cm



Grass Talk, 2023, oil on canvas (diptych), 102 X 204 cm

|  |         |
|--|---------|
| Granite Corridor, 2023-2024, oil on canvas, 120 x 100 cm (foyer)   | \$6,900 |
| Study for ‘Bald Head’ 2, 2022, pastel on paper, 42 x 30 cm (foyer) | \$800   |
| Desert Oak, 2024, oil on canvas, 60 x 50 cm                        | \$2,400 |
| Barrier Range, 2023-2024, oil on canvas, 60 x 110 cm               | \$4,900 |
| Cobbitty Dam, 2022, oil on board, 53 x 113 cm                      | \$4,400 |
| Erosion, 2024, oil on canvas, 38 x 31 cm                           | \$1,100 |
| Estuarine, oil on canvas, 35 x 56 cm                               | \$1,800 |
| Grass Talk, 2023, oil on canvas (diptych), 102 x 204 cm            | \$9,900 |
| Lining the Estuary, 2025, gouache on paper, 38 x 57 cm             | \$1,200 |
| Ocean Pool, 2021-2022, oil on canvas, 138 x 183 cm                 | \$9,000 |
| Off Road, 2024, oil on canvas, 50 x 60 cm (on cover)               | \$2,400 |
| Study for Estuarine, 2024, gouache on paper, 38 x 42 cm            | \$1,000 |

## Room 3

## HUA YE

Hua Ye is deeply inspired by Australia's unique environment and humanistic atmosphere, Ye integrates oriental culture into his art while absorbing local influences. His work reflects a blend of Eastern and Western artistic traditions with inspiration from varied artists such as Claude Monet and Anselm Kiefer. His work has been described as 'idealized, poetic, and lyrical, with romantic and expressive colours, free and varied brushwork, and a beautiful, aesthetic form.' (Art Critic Jia Dejiang)

Born in China, Ye studied Fine Arts at the Academy of Art in Guangzhou from 1984 to 1988 and worked as a Graphic Designer. Since moving to Sydney in 1990 he has won several prizes for his watercolour paintings and drawings, including multiple awards at the Sydney Royal Arts Show, the Winsor & Newton Art Prize and Lane Cove Art Society.

The works of Ye in this exhibition showcase his ability to bridge the wisdom of the East and the West, creating a unique painting environment. His art invites viewers to experience the harmony and divergence of different cultures through his masterful use of colour and form.



*Schlumbergera Truncata*



*Crossroads 1*

|  |         |
|--|---------|
| <i>Rocky Shore</i> , oil and acrylic on canvas, 77 x 142 cm (foyer)              | \$6,600 |
| <i>Sunrise at North Curl Curl</i> , oil on canvas, 52 x 61 cm (foyer)            | \$3,400 |
| <i>Before Sunrise at Warriewood Beach</i> , oil on canvas, 52 x 61 cm (foyer)    | \$3,300 |
| <i>Morning Mist</i> , watercolour, 56 x 76 cm (foyer)                            | \$3,500 |
| <i>Crossroads 1</i> , watercolour on paper, 76 x 108 cm                          | \$5,000 |
| <i>Crossroads 2</i> , oil and acrylic on canvas, 73 x 76 cm                      | \$4,000 |
| <i>Oil Painting Sketch 1</i> , oil on canvas, 25.5 x 21 cm                       | \$600   |
| <i>Oil Painting Sketch 2</i> , oil on canvas, 25.5 x 21 cm                       | \$600   |
| <i>Oil Painting Sketch 3</i> , oil on canvas, 25.5 x 21 cm                       | \$600   |
| <i>Urban Arteries</i> , oil on canvas, 76 x 100 cm                               | \$5,500 |
| <i>Old Brick Factory in the afternoon</i> , oil on canvas, 52 x 61 cm (on cover) | \$3,100 |
| <i>Street View of Crows Nest</i> , oil on canvas, 50 x 65 cm                     | \$3,400 |
| <i>Burwood Railway</i> , ink on paper, 75 x 78 cm                                | \$3,800 |
| <i>Little Lane, 2023</i> , oil on board, 37 x 42 cm                              | \$1,200 |
| <i>Schlumbergera Truncata</i> , oil on canvas, 45.5 x 45.5 cm                    | \$1,300 |
| <i>Doryanthes</i> , oil on canvas, 31 x 31 cm                                    | \$650   |
| <i>Still Life</i> , oil on canvas, 63 x 75 cm                                    | \$4,000 |



Gallery hours Tues to Sat 10 am-5 pm FREE ENTRY | Gate 7, 1666 Pacific Highway, Wahroonga | **02 9473 7878**

**[gcsgallery@abbotsleigh.nsw.edu.au](mailto:gcsgallery@abbotsleigh.nsw.edu.au)** | **[gcsgallery.com.au](http://gcsgallery.com.au)** | An Anglican Pre K-12 Day and Boarding School for Girls

*The Grace Cossington Smith Gallery acknowledges the Dharug People as the Traditional Custodians of the land upon which the gallery rests. We acknowledge and pay respect to the elders, past and present.*