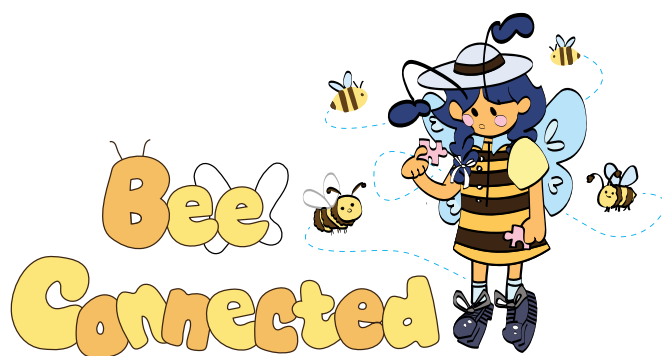


The Shuttle

Time flies faster than a weaver's shuttle.



'Bee Connected' through The Good of the Hive

Mrs Megan Krimmer
Headmistress

“Bees never forget that they are part of something bigger than themselves... their hive is a part of them. What if we embodied this idea? What if we got curious about the world and each other again instead of intimidated by it? This is why I turn walls into windows – to remember that we are all connected... that separation is an illusion.” Artist Matt Willey

It is a great joy to have Matt Willey join Abbotsleigh as our Artist in Residence this term. Believing that we have so much to learn from bees; how they work; how they relate; how they communicate; how they live as a community and how they do everything for the good of the hive, Matt Willey started 'The Good of the Hive' global project a number of years ago. Matt's mission is to paint 50,000 honey bees (the number of bees in a healthy, thriving hive) on murals around the world, and we are absolutely delighted that a number of those bees are taking shape at Abbotsleigh, where Matt is painting his first ever Australian 'Good of the Hive' mural.

To date, Matt has inspired thousands of people who have seen his murals around the world, and presently, he is inspiring our girls, staff, parents and Old Girls as



he paints and discusses his mural at Abbotsleigh, which is taking shape outside the iHub on the wall that leads to the Senior School top oval.

Mrs Victoria Rennie, our Deputy Headmistress/Head of Senior School has written an excellent article about 'The Good of the Hive' and the inter-connectedness of bees, which of course fits in beautifully with our 2025 Prefect theme 'Bee Connected'. I commend Mrs Rennie's article to you and I hope that you will take the time to come and see the beautiful mural Matt Willey is painting for Abbotsleigh.



The Good of the Hive

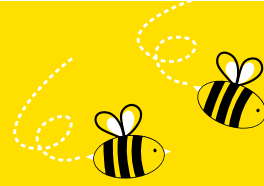
Mrs Victoria Rennie
Deputy Headmistress and Head of Senior School

“The hive I am creating is a metaphor for us all...no matter your colour, nationality, religion, gender, age or economic status. This piece of art is an idealised picture of health to focus on as we work toward solutions.” – Matt Willey

This week in Senior School assembly we had the incredible privilege of hearing from Matt Willey, the visionary artist behind the ‘Good of the Hive’ global project. Matt shared his personal journey and the powerful message behind his art, leaving us with a renewed sense of purpose and connection. We are especially excited to see that the mural, already well underway here at Abbotsleigh as part of our 140th anniversary celebrations, is taking shape right before our eyes and it is exciting to witness this meaningful collaboration come to life.

Matt founded ‘The Good of the Hive’ with the goal of hand-painting 50,000 honey bees around the world—the number in a healthy, thriving hive. His project highlights not just the importance of bees to our environment, but also the deeper metaphor of interconnectedness. The hive, with its collective intelligence and communal strength, serves as a perfect representation of our shared responsibility to care for the planet and each other.

During his talk, Matt explained how honey bees work as a collective, where the health of the hive depends on the health of every individual bee. This concept deeply resonates with us as a school community and indeed with the Prefect theme in 2025, ‘Bee Connected’. Just as bees collaborate for the wellbeing of the hive, we too must recognise that our own health and success are tied to the collective good of those around us. Matt also spoke about the way bees communicate and make decisions as a collective, particularly the female bees who lead the way when it's time to find a new home. This process, where the older bees guide the rest through a dance called the



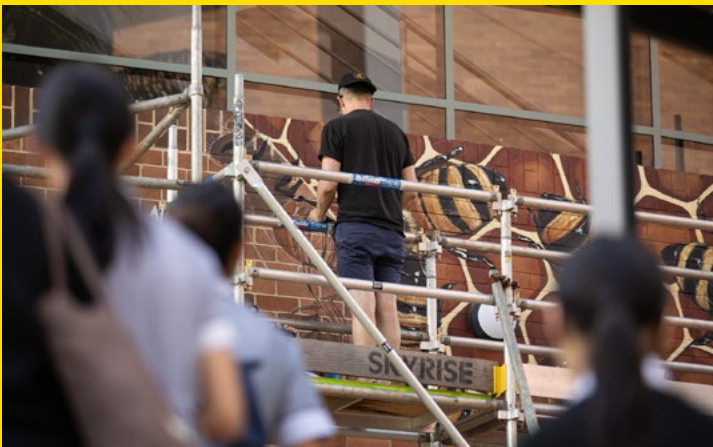
Waggle, serves as a beautiful metaphor for collaboration and leadership, especially meaningful for us as a girls’ school.

One of the most poignant parts of Matt’s talk was when he explained that the bees are symbolic of humans, trees, animals, water, soil – everything that sustains life. The work he’s creating, both globally and right here at Abbotsleigh, is a reminder that we are all part of one interconnected ecosystem, regardless of our differences. His mural is not just a magnificent piece of art; it’s a message that encourages us to consider how we can work together for a healthier, more sustainable world.

As the mural at Abbotsleigh continues to take shape, we are filled with excitement and gratitude. We are honoured to be part of The Good of the Hive and to have Matt’s work on our walls as a lasting symbol of the values we hold dear. The mural represents the collective effort we all share – our commitment to a better future, the strength we find in each other and the beauty that emerges when we come together.

We look forward to seeing the mural completed and to continuing our journey as part of this global movement. The bees are already here, reminding us of the importance of community, sustainability and the interconnectedness of all things. Let’s carry the message of the hive with us as we work together to create a better world, one that is filled with beauty, collaboration and respect for our planet and each other.

Thank you to Matt for his inspiring words and for gifting us with this remarkable project. We can’t wait to see how his art continues to shape our school and our understanding of the world around us.



Chaplain

Connectedness

Rev Sarah Hobba
Senior Chaplain and Head of Christian Studies

Our boarders' chapel series is focusing on our life together, and this week the girls had the challenge to do a jigsaw that had pictures of murals for places where our boarders live. We also reflected on the way that the Good of Hive mural by Matt Willey connects us to something larger.

Throughout the Bible, the importance of our interconnectedness and interdependence can be seen in three key areas: with the creation, with God and with each other. Our connection to the environment calls us to be stewards of the earth. This stewardship reflects our love for the Creator and for the creation of which we have oversight (Psalm 8). The scriptures emphasise our dependence on God, with Jesus using the metaphor of a vine and branches (John 15:5). Staying connected to God, the source of love, enables us to bear fruit in our lives. Being connected to God helps us form life-giving connections with others, leading to joy and flourishing in our lives (John 15:12).

John 15: 5, 9-13

I am the vine, and you are the branches. If you stay joined to me, and I to you, you will produce plenty of fruit. But separated from me you won't be able to do anything. I have loved you as the Father has loved me.

Now continue in my love. I have obeyed my Father's commands, and he continues to love me. In the same way, if you obey my commands, I will continue to love you. I have told you these things so that my joy may be your joy and that your joy may be complete. This is what I command you: Love each other as I have loved you. There is no greater love than to lay down one's life for one's friends.

Upcoming events

WHOLE SCHOOL

Good of the Hive art installation	Ongoing	Senior School campus
A Studio Community exhibition	Wednesday 27 March to Saturday 26 April	Grace Cossington Smith Gallery
Abbotsleigh Autumn Fair and opening of the Betty Archdale Library	Saturday 29 March	Senior School campus Click here to read more

Mystery Masterpieces at the Abbotsleigh Autumn Fair	Saturday 29 March	Grace Cossington Smith Gallery
SchoolTV program – student wellbeing resouces	Available to all parents on the Parent Portal	Click here to watch

JUNIOR SCHOOL

Vacation Care is now open for bookings		Click here to download the program and book
T-2 Intensive Swimming Week	Monday 24 to Friday 28 March	Junior School Swimming Pool
Year 6 Halogen Young Leaders Day	Tuesday 25 March 8.20 am-3 pm	International Convention Centre, Sydney
ELC and Transition ACEE visit	Tuesday 25 March 8.30 am-2.30 pm	Abbotsleigh Centre for Environmental Education
CIS Swimming and Diving Carnival	Wednesday 26 March 8.30 am-3 pm	SOPAC
JS Production rehearsal	Friday 28 March 3.30-5.30 pm	Everett Hall
ISDA Debating Round 7 vs Brigidine College	Friday 28 March 4-9 pm	GLC
Student portrait re-shoot	Monday 31 March	Due to poor lighting on some of the portraits from our recent photo day, some girls will be having their portrait re-taken. Your daughter may be involved in this, therefore please ensure she is dressed in full summer uniform and her hair tied back with the correct ribbon/scrunchie.
Parent teacher interviews	Monday 31 March and Tuesday 1 April	
Year 6 CRU FIT excursion (Selected students)	Tuesday 1 April 11.45 am-3.15 pm	Barker College
IPSHA Cross Country Carnival	Wednesday 2 April 8 am-12 noon	The King's School, Parramatta
Years 1-3 Gateways excursion (Selected students)	Thursday 3 April 9 am-3 pm	Corpus Christie Catholic Primary School
Year 3 Taronga Zoo excursion	Friday 4 April 8.30 am-3 pm	Taronga Zoo
Years 4-6 Gateways excursion (Selected students)	Friday 4 April 9 am-3 pm	Corpus Christie Catholic Primary School
JS Production Rehearsal	Friday 4 April 3.30-5.30 pm	Everett Hall
JS Production Rehearsal	Saturday 5 April 3.30-5.30 pm	Everett Hall

SENIOR SCHOOL

Saturday Sport	Saturday 15 March	Click here for times and venues
Year 10 vaccinations	Monday 24 March 8.20 am-1.30 pm	
Science and Engineering Challenge	Tuesday 25 March 8.20 am-3.30 pm	
Year 7 parent/teacher interviews	Tuesday 25 March 3.30-8.30 pm	Via Zoom
OxClo National Competition	Wednesday 26 March 2-4.30 pm	Senior School
Year 12 Geography field trip	Wednesday 26 to Friday 28 March	Jindabyne
Year 10 Regency Morning Tea	Friday 28 March 8.20-9.35 am	Gymnasium
ISDA Debating Round 7 vs Brigidine College	Friday 28 March 4-9 pm	GLC
Saturday Sport	Saturday 29 March	Times and venues to be advised
Year 12 Ancient History and Year 12 Aboriginal Studies excursion	Tuesday 1 to Wednesday 2 April	Canberra
Year 10 Mandatory Geography field trip	Wednesday 2 April 8.20 am-3.25 pm	Long Reef
Bunda fundraiser <i>Mufasa</i> movie afternoon	Friday 4 April 4.30-6.45 pm	Hornsby Odeon Cinema