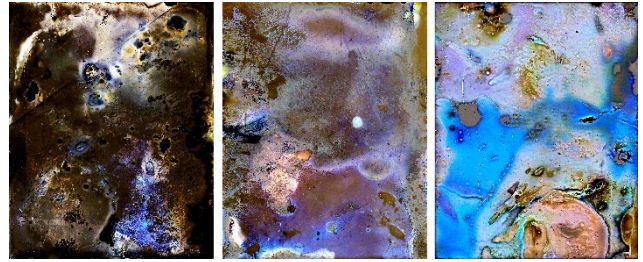


**Artists:** David Haines, Samantha Jade and Koji Makino **Exhibition:** *Fieldwork* 6 to 28 October 2023



David Haines *Field Study 1 and Field Study 2: 665 nanometer infrared, Queenstown, Tasmania* 2023, 90 x 90 cm



Samantha Jade *Sympoietic Coupling #1 and Sympoietic Coupling #1*, 2023, film developed in compost, fine art print; right - *Lithobiontic Ones*, 2023, film developed in compost, fine art print

## About

*Fieldwork*, curated by Jack Harman, is an exhibition of artists whose works critically engage with ecology, materiality, and temporality through photo-graphic media. *Fieldwork* aims to highlight different approaches to image making. David Haines creates his works with an infrared camera, Samantha Jade has no camera but exposes and develops film that is then printed, Koji Makino uses a pinhole camera.

Below: Koji Makino *Standing on the edge of the continent*, 2019, lambda print, 78 x 56 cm



## The Artists

**David Haines** is a Senior Lecturer in Visual Arts at the University of NSW. He has been a practising artist for 30 years and has exhibited prolifically internationally in museums, festivals and alternative exhibition spaces. He is interested in unusual forms of image making, including computer-simulated optics and ray tracing, hydrogen alpha solar photography, digital imaging and computer art. In this exhibition Haines' works were photographed with an infra-red camera.

<https://www.haineshinterding.net/tag/david-haines/>

**Samantha Jade** is a recent graduate from the National Art School Sydney. During Covid, working from home, she did not have photography facilities. The garden became a studio of sorts when she buried colour film in compost. The artist used the organic materiality of film to directly engage with micro and macro-organisms and their associated environments in the garden to become an intrinsic part of the film itself. This is a cameraless process and the results are the product of the chance exchange between the chemicals of film and micro and macro-organisms.

<https://stanleystreetgallery.com.au/exhibitions/a-place-where-we-can-be-together#tab-artists>

**Koji Makino** is a Japanese-Australian photographer, living and working in Sydney. His photograph was made in the surf by using a pinhole camera, an early form of photographic device based on the camera obscura principles. The long exposure time required by this technique left a blurry impression of the horizon in the distance, contrasted by markings of immediacy and acute physicality made by salt, water and other elements that crept into the camera during the exposure.

## Studying

- Research the history and development of photography. There are many sites, but you could start here: <https://libguides.colum.edu/photography/historyofphotography>
- Research terms associated with the works: infra-red camera, pinhole camera, camera obscura, cameraless technique, ecology, materiality, temporality, Sympoietic, Lithobiontic

## Making

- Follow the instructions here to make a pinhole camera.  
If you have the access to photo paper and chemicals you can take and develop your own photograph

<https://amateurphotographer.com/technique/film-photography/how-to-make-a-pinhole-camera-and-take-photos-in-10-steps/>

- If you do not have film, paper or chemicals you could follow this link to make a camera obscura

<https://kids.nationalgeographic.com/books/article/pinhole-camera>