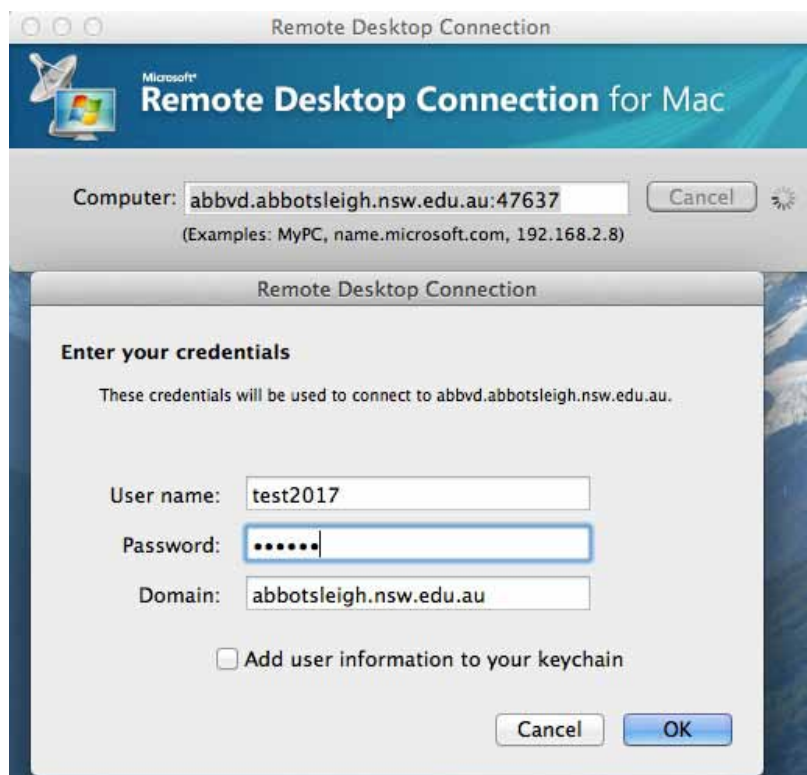


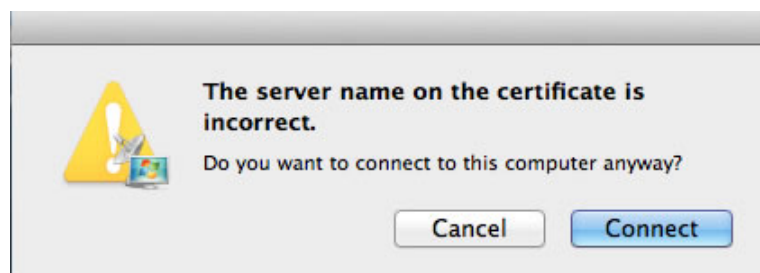
Virtual Desktop for Mac

To use the Virtual Desktop with an Apple Mac OSX (Snow Leopard or Lion) operating system, please follow the below steps.

1. Ensure you have the Remote Desktop Connection Client for Mac. If you do not have this, please download it from the Microsoft website: <http://www.microsoft.com/download/en/details.aspx?id=18140>. Please follow the steps on the Microsoft website to install the Remote Desktop Connection Client
2. Please download the Abbotsleigh Remote Desktop Client file onto your desktop. The file is located here: <http://www.abbotsleigh.nsw.edu.au/online/Documents/Abbotsleigh.rdp>.
3. Double click the icon. The following screen will then appear.
 - Enter your Abbotsleigh username and password
 - Click OK.



4. Another dialogue box will appear indicating that 'the server name on the certificate is incorrect'.
 - Click Connect.



5. Once connected, you will then be asked to log in to the Virtual Desktop.
6. To log on the Virtual Desktop again, double click the Abbotsleigh RDP icon saved on the desktop and follow from steps 3-5.

If you have difficulties with the Virtual Desktop after reading this guide, please contact the IT Service Desk on 9473 7750 during normal business hours.

